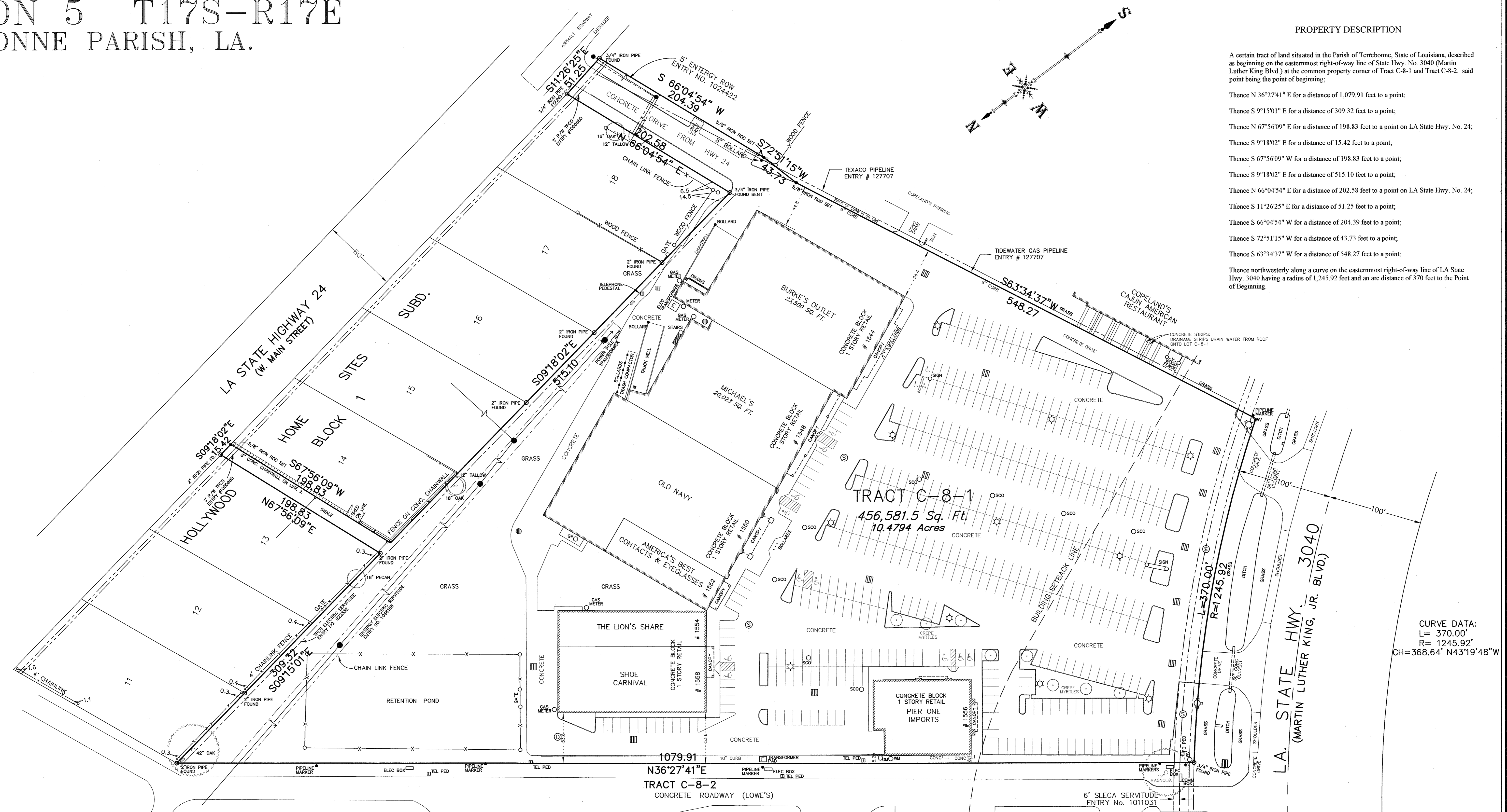


SECTION 5 T17S-R17E TERREBONNE PARISH, LA.

PROPERTY DESCRIPTION

A certain tract of land situated in the Parish of Terrebonne, State of Louisiana, described as beginning on the easternmost right-of-way line of State Hwy. No. 3040 (Martin Luther King Blvd.) at the common property corner of Tract C-8-1 and Tract C-8-2, said point being the point of beginning;

- Thence N 36°27'41" E for a distance of 1,079.91 feet to a point;
- Thence S 9°15'01" E for a distance of 309.32 feet to a point;
- Thence N 67°56'09" E for a distance of 198.83 feet to a point on LA State Hwy. No. 24;
- Thence S 9°18'02" E for a distance of 15.42 feet to a point;
- Thence S 67°56'09" W for a distance of 198.83 feet to a point;
- Thence S 9°18'02" E for a distance of 515.10 feet to a point;
- Thence N 66°04'54" E for a distance of 202.58 feet to a point on LA State Hwy. No. 24;
- Thence S 11°26'25" E for a distance of 51.25 feet to a point;
- Thence S 66°04'54" W for a distance of 204.39 feet to a point;
- Thence S 72°51'15" W for a distance of 43.73 feet to a point;
- Thence S 63°34'37" W for a distance of 548.27 feet to a point;
- Thence northwesterly along a curve on the easternmost right-of-way line of LA State Hwy. 3040 having a radius of 1,245.92 feet and an arc distance of 370 feet to the Point of Beginning.



CURVE DATA:
L= 370.00'
R= 1245.92'
CH= 368.64' N43°19'48" W

CERTAIN FEATURES I.E. FENCES, WALLS, ETC. MAY BE EXAGGERATED IN SCALE FOR CLARITY. DIMENSIONS SHOW ACTUAL LOCATIONS.

THIS PROPERTY IS LOCATED IN FLOOD ZONE C AS SHOWN ON FEMA COMMUNITY PANEL NUMBER 2252060265C AND 2252060430C DATED MAY 1, 1985.

LEGEND

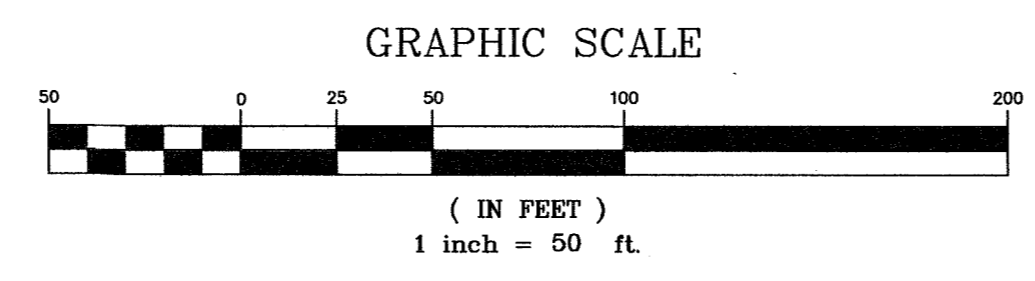
	DRAIN MANHOLE
	WATER MANHOLE
	SEWER MANHOLE
	GAS MANHOLE
	UNDERGROUND ELECTRIC & MANHOLE
	OVERHEAD ELECTRIC & POLE
	UNDERGROUND TELEPHONE & MANHOLE
	CATV
	CATV BOX
	WESTERN UNION MH

-
-
-
-
-
-
-
-
-
-
-
-
-

REFERENCE MAPS:
SURVEY OF TRACT C-8-1 BY CHARLES MCDONALD DATED SEPTEMBER 1, 1999.
HOLLYWOOD HOME SITES SUBDIVISION BY T. BAKER SMITH DATED FEBRUARY 1, 1941.

BEARINGS ARE BASED ON RECORD BEARINGS.

THE LOCATIONS OF UNDERGROUND AND OTHER NONVISIBLE UTILITIES SHOWN HEREON HAVE BEEN DETERMINED FROM DATA EITHER FURNISHED BY THE AGENCIES CONTROLLING SUCH DATA AND/OR EXTRACTED FROM RECORDS MADE AVAILABLE TO US BY THE AGENCIES CONTROLLING SUCH RECORDS. WHERE FOUND, THE SURFACE FEATURES OF LOCATIONS ARE SHOWN. THE ACTUAL NONVISIBLE LOCATIONS MAY VARY FROM THOSE SHOWN HEREON. EACH AGENCY SHOULD BE CONTACTED RELATIVE TO THE PRECISE LOCATION OF ITS UNDERGROUND INSTALLATION PRIOR TO ANY RELIANCE UPON THE ACCURACY OF SUCH LOCATIONS SHOWN HEREON, INCLUDING PRIOR TO EXCAVATION AND DIGGING.



Survey of Tract C-8-1 made for Virlane Associates, L.L.C. at request of Mr. Sydney Besthoff. New Orleans, La. September 1, 2011.

I certify to Virlane Associates, L.L.C., Kimco Houma 274, LLC, and First American Title Insurance Company of Louisiana, that this plat is a delineation of a survey made on the ground, under my supervision and meets the requirements for a Class B Survey as defined in the Minimum Standards for Property Boundary Surveys in the State of Louisiana. New Orleans, La. September 1, 2011
Revised with respect to areas of catchoutlets, April 26, 2012

Professional Land Surveyor
License No. 4628

